

Mark's Mellow Guitar

We all had such good memories of Mark

Ashford's recital last year that to invite him again was our unanimous choice. However, the inspiration we felt at the end of this year's superb recital was probably even greater than last year.

Mark made an excellent choice by starting the programme with the 2nd Lute Suite by Bach. His interpretation of Bach is both intelligent and sensitive; the progression from movement to movement followed with excellent logic and drama. With his clear and precise tone Mark skilfully created an effect of growing intensity - we all were under the spell of the wonderful unifying force and the final Double sparked the most enthusiastic applause. Mark's interpretation created a special atmosphere of trust and rapport between the artist and the audience, something rare which makes such performance stay in the memory.

Then followed two romantic pieces an Elegy by Mertz and Variations on the 'Folia de Espania' by Giuliani. Both were played with the utmost sincerity and warmth. Mark has this wonderful gift - to create in his music many intimate moments, but he never falls into mere sentimentality.

The interpretation of



Mark Ashford playing some sumptuous Bach on 25th September

Torroba's Sonatina was one of the most poetical I have ever heard. A beautifully light and playful opening was followed by a very well sustained middle part where Mark found deep colours and submerged his audience in a dreamy mood, only to awaken everyone with a firework display of tremolos and rasgueados in the final Allegro.

Segovia by Roussel is not a well-known piece but begins and ends in a very entertaining dancing style with a short, mysterious, episode in the middle,

beautifully written and played with real panache.

The climax of the second half was the remarkable Sonata by Ginastera. This piece uses a totally modern idiom. It is passionate throughout and most of the time portrays a desperate mood. The secret of the enjoyment of this music lies in the fact that it is not depicting the oppression and destruction so common in modern music, but the incredible energy of colliding cosmic elements, interrupted only by sudden glimpses of

New Members

We extend a warm welcome to the following new members:

Laurie and Gladys Beeson, Arundel

Christine Carr, Bognor Regis

Harun and Mariani Coombes and family, Bognor Regis

Geoffrey and Debbie Gibbs, Chichester

Daniel Middlehurst, Chichester

Ian Pettie, Felpham

Rev. Martin Sully, Walberton

Stefan Olejnik, Shoreham-by-Sea

celestial peace. It was a fascinating insight into some primeval time. The guitar in this sonata is used in most astonishing way - every part of the strings and its body is made to produce amazing sounds. It must be a very difficult piece to play - with fast scales, rasgueados and wild harmonies. Yet the

(Continued on page 6)

Inside This Issue

What is a Workshop?	page 2
Library Notes	page 2
Children in Need	page 2
Worthing Festival Report	page 3
Christmas Party	page 6
Shuko Shibata Recital	page 6

What is a Workshop?

Traditionally of course it is a place where people meet together to make something. So it is about practical activity and an end product. A workshop is also a place where people develop their skills and learn from each other (craftsmen can learn from apprentices too).

The idea was borrowed by Training and Development specialists trying to get away from 'chalk and talk' and applied to events where groups of practitioners meet to work on specific agreed problems. It is 'learning by doing', aimed at some practical

achievement.

As guitarists many practical problems face us: what to play for a particular Grade exam, Renaissance style, Baroque ornaments, ensemble playing, F# tuning, Flamenco techniques for classical

players, public performance etc., etc. With many practical difficulties it is helpful to tackle them with the support and help of others 'in the same boat'.

Your committee has asked me to talk to interested members so that we can

agree subjects to tackle, and build workshop activities into our programme of events. We also need to find workshop leaders, whom I will undertake to assist with

As guitarists many practical problems face us

the administration and for whom I will 'fetch and carry' on the day.

Leaders may be visiting professionals – and it is proposed to run workshops with Hezy Levy (2nd April) and Tomas Jimenez (20th May) – or they could be led by our own members or local teachers (workshops are less about sitting at the feet of a

guru and more about co-operation and self-help).

Setting up workshops is a co-operative activity too – I need to know what response there is from members, and what suggestions they have for workshop subjects. I will make myself known at club evenings and concerts, or I may ring you, but please do not wait to be approached. I need to know now: 1. WHO IS FOR WORKSHOPS? and 2. WHAT SUBJECTS SHOULD WE TACKLE?. Please phone me on 01403 253455.

Geoff Lunn

Library Notes

Thanks to the generosity of Club members, the sheet music section of the Library is expanding rapidly and we are grateful to Geoff Lunn and David and Alison Stonestreet for the most recent additions.

I have divided the music into three sections – Solo pieces (S), Tutors and Techniques (T) and Ensembles, including duets, trios, and quartets (E). They are now located in record boxes which makes selecting pieces to play much easier than when they were on the shelf with the magazines. Why not take a fresh look at this section of the Library during the next club evening?

I like to know that the Library can run smoothly even if I am not present, so, particularly for the sake of new members, I will remind everyone of the system we use when borrowing recorded and sheet music.

Members may borrow

up to three items at a time, but only one CD. Enter the Code letter and number, your name and the date in the RED FILE on the appropriate page. Each item is clearly marked with its code except the magazine. For these enter the date of the magazine instead of the code.

When returning an item, place it in the RED BOX with your name on an attached 'Post-It' label (found in the box).

Following this simple system makes it easy for me

to check returned music and replace it in the correct position on the Library shelves. Please do not leave items elsewhere in the Library as they may become mislaid.

I hope you will continue to find the Library a useful source of guitar music for both enjoyable listening and playing. Please do not hesitate to tell me if you have any suggestions for improvements. I can be contacted on 01243 782378.

Pam Davis

FOR SALE

Vicente Sanchis guitar

(Left Hand Build)
Seville 1997

Excellent sustain and volume.

**Cost £800
Will sell for considerably less to enthusiastic player.**

Contact John Newsom
14 Saxon Meadow,
Tangmere
PO20 6GA

Children in Need - Saturday 27th November

Sally Paice and friends invite you to a 'Guitar Festival' on Saturday 27th November at 7.30pm in the Parish Hall at Selsey, which is being held in support of the BBC's Children in Need Appeal.

Come and enjoy an evening of Guitar Music played by local performers, including club members, children and adults. There will be music for all tastes - Classical, Latin-American, Flamenco, Folk and music

from the shows.

Tickets £2.50 adults, £1.25 children, available from the Portman Building Society, Selsey, or at the door.



Linda Kelsall-Barnett



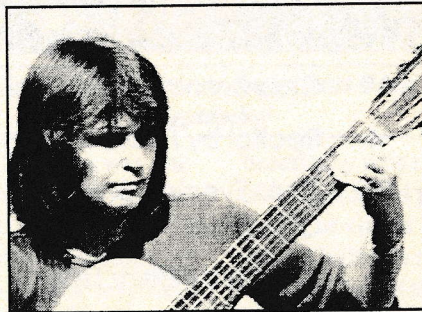
Luigi Caste



Alastair Ridley



Peter Russell



Sally Paice



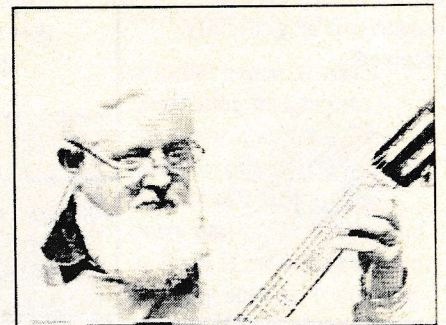
Terry Woodgate



John Mason



Mitch Callow



Len McCormack

Mark Ashford...

(Continued from page 1)
composer has uncovered the space and time where such a world exists and the artist honestly recreated this fascinating picture.

Then followed two excellent encores: the soothing and comforting "Return to Stromness" by Peter Maxwell-Davis with its gentle swing and

sentimental motif of the early seventies and finally the enchanting caprice by Tarrega - Alborada. Mark's excellent technique, beautiful tone and noble spirit turned our hall into a Viennese ballroom and crystal harmonics sparkled like chandeliers above our heads!... Could there have been a better close to a

magical evening?

We all wished Mark good luck in the Guitar Foundation of America competition where he was going to perform at the end of the month. A few weeks later I received this message from Mark:

"Dear Sasha, Just a quick note to let you know that I was awarded Second

Prize in this year's GFA competition in Charleston, South Carolina. It was a very nerve wracking week but well worth it in the end. It was great to play again for your guitar society especially as I was able to perform some of the pieces that I had to play in the competition".

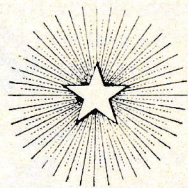
Sasha Levtov

Christmas Party

owing to the huge popularity of last year's Christmas Party, when we were hard-pressed to squeeze everybody in, it has been decided to make this year's party on 11th December an all-ticket occasion for members and their guests only (see enclosed invitation).

This means that if you are planning to come you **must ring Jonathan Parrott on 01243 528573 (evenings only) to book your ticket(s)**, preferably by 4th December so that we have a few days to plan the catering. However, tickets will also be available at the door.

As in previous years there will be a raffle so any prize you may care to donate will be gratefully received!



1999/2000 Programme

1999	
December	11 Christmas Party
2000	
January	22 Recital by <i>Shuko Shibata</i>
February	12/13 Chichester Festival 13 Adjudicator: Charles Ramirez 19 Club Evening & Festival Winners
March	4 Recital by <i>Fabio Zanon</i> 25 Club Evening & Junior Orchestra
April	1 Recital by <i>Hezy Levy</i> 2 Workshop with <i>Hezy Levy</i>
May	6 Club Evening & Junior Orchestra 20 Flamenco recital by <i>Tomas Jimenez</i> 21 Workshop with <i>Tomas Jimenez</i>
June	10 Recital by <i>Helen Sanderson</i> (guitar) & <i>Mark Wilde</i> (tenor)
July	1 Club Evening & Junior Orchestra 22 Summer Party

All events (except the Festival) take place on Saturdays at 7:30pm at the Regis School of Music, 46 Sudley Road, Bognor Regis. For details phone 01243 866462

Shuko Shibata Recital - 22nd January

I had the privilege of hearing Shuko play at Southampton Classical Guitar Society's Mini-Festival last June and would urge you all to come and see her on the 22nd.

She combines a flawless technique with great sensitivity and is simply a joy to listen to. In her programme she played some of her own pieces, which were highly atmospheric and delicately played. Hopefully she will repeat some of these on this occasion.

Tickets are available from Jonathan Parrott, either at the Christmas Party, by phone (01243 528573) or by post - 59 Croft Mead, Chichester PO19 4RW. Cheques should be made payable to West Sussex Guitar Club.

A £1 discount will apply to all tickets purchased by 31st December, so hurry, hurry, hurry!

Richard Prior